

MODEL AM4.0WA(409A)

Four-Post Alignment Lift

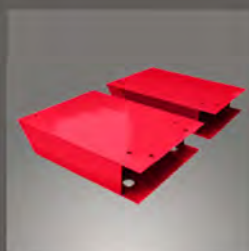


FEATURES

- 4 ton Capacity
- Electric-air control system
- Mechanical automatic lock & air-drive safety release
- Electric / Hydraulic power unit
- Skid proof diamond plated platform
- Two adjustable turnplate positions to fit varying vehicle wheel bases
- Adjustable platform & adjustable safety lock ladders
- Gimbal slip plate design to ensure accurate data
- Dual safety device
- Safety stop device activates at the height of 300mm & both control buttons are then required to lower the lift the final 300mm with an audible alarm for safety
- 5 Year structural warranty
- 3 Year hydraulic, electrical & mechanical warranty
- Certified to Australian Standards
- Worksafe Design Registered

SPECIFICATIONS

| | |
|----------------------------|---------------|
| Model | AM4.0WA(409A) |
| Lifting Capacity | 4.0T |
| Lifting Time | 45S |
| Lifting Height | 1915mm |
| Overall Length(Incl.Ramps) | 5512mm |
| Overall Length(No.Ramps) | 4600mm |
| Overall Width | 3208mm |
| Width Between Columns | 2852mm |
| Motor | 2.0/3.0HP |
| Gross Weight | 1120kg |



Extension platform



Electro-air safety release



Each Alignment lift needs one set of turnplates