

# 650 XD



# GEOLINER® 650 XD HIGHLY ACCURATE WHEEL ALIGNMENT SYSTEMS

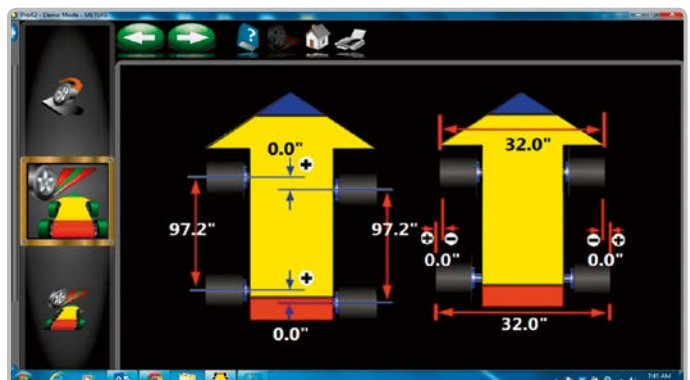
## VERSATILE, ACCURATE HARDWARE

- High-resolution cameras produce accurate, live alignment readings and diagnostic data
- Passive front and rear XD targets improve durability with no electronics to damage
- Advanced XD targets and AC100 clamps are lightweight, durable and impact resistant

## STANDARD DIMENSIONING AND PRODUCTIVITY FEATURES

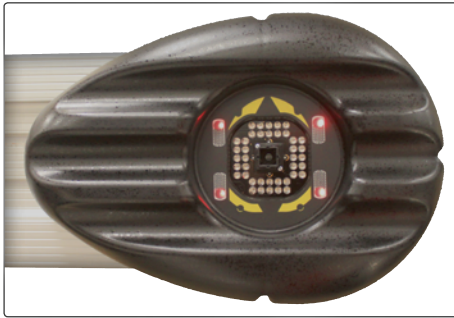
- Vehicle track width and wheel base
- Individual wheel side set and set-back
- EZ-TOE\* for adjusting without using the steering wheel holder
- Guided adjustments of single tie rod, drag link and cradle

\* Patented and/or patent-pending features



# THE GEOLINER® 650 XD WHEEL ALIGNMENT SYSTEM PROVIDES CORE FEATURES FOR THE ALIGNMENT PROFESSIONAL

Patented imaging technology provides accurate and real-time measurements that improves productivity. User-friendly features such as EZ-TOE\*, VODI\* and an extensive vehicle specification database delivers customer satisfaction, ease of use and accuracy.



---

## Ride height\* measurement

Manual ride height to obtain proper alignment specs for those vehicles requiring it

---

## EZ-Toe\*

Turn the front wheels and access difficult adjustment points while still displaying centred toe readings

---

## User-friendly interface

Use available step-by-step instructions as a guide for completing even the most complex tasks

---

## Manufacturer specs

Extensive OEM specs allow quick and accurate vehicle selection

---

## VODI™

Vehicle Orientation Directional Indicator\* – guides the technician through the measurement process

---

## Help videos

View detailed videos of how to make needed adjustments to complete even the most complex task

---

# AC100 UNIVERSAL WHEEL CLAMPS



## Fast and easy to use

- Self-centring design for accurate measurement of vehicle dimensions
- Two-sided claws eliminate accessories and allow reliable clamping even over hub caps
- Accessories available to accommodate larger wheels

\* Patented and/or patent-pending features

# 650 XD



# geoliner®

WHEEL ALIGNMENT SYSTEMS

## TECHNICAL DATA

Track width	122 cm – 244 cm
Wheel base	201 cm – 457 cm
Shipping weights	227 kg
Power requirements	230 V 1ph 50–60 Hz

## Technical Data AC100

Rim size	11" – 22" (29,94 – 55,88 cm)
Weight	4.9 – 5.2 kg
Construction	Cast aluminium

## Standard accessories

Wheel clamps & targets  
Steering wheel holder  
Brake pedal depressor  
Two wheel chocks  
Printer

## OPTIONAL ACCESSORIES

Drive-on camera aid  
EAK0289J91A

Hub adaptor kit for wheels-off alignment  
29215

AC100 universal wheel clamp extension kit  
30926

Dual tall support kit  
EAK0289J80A

Centre tall support kit  
4031236

Dual short support kit  
EAK0289J81A

Centre short support kit  
4031234

Tilt camera beam  
4031154

TIP target  
4028515

### EMEA-JA

Snap-on Equipment s.r.l. - Via Prov. Carpi, 33 - 42015 Correggio (RE)  
Phone: +39 0522 733-411 - Fax: +39 0522 733-479 - www.hofmann-europe.com

### Austria

Snap-on Equipment Austria GmbH - Hauptstrasse 24/Top 14 - A-2880 St. Corona/Wechsel (RE)  
Phone: +43 1 865 97 84 - Fax: +43 1 865 97 84 29 - www.hofmann-europe.com

### France

Snap-on Equipment France - ZA du Vert Galant - 15, rue de la Guivernone BP 97175  
Saint-Ouen-l'Aumône - 95056 Cergy-Pontoise CEDEX  
Phone: +33 134 48 58-78 - Fax: +33 134 48 58-70 - www.hofmann-france.fr

### Germany

Snap-on Equipment GmbH - Konrad-Zuse-Straße 1 - 84579 Unterneukirchen  
Phone: +49 8634 622-0 - Fax: +49 8634 5501 - www.hofmann-deutschland.com

### Italy

Snap-on Equipment s.r.l. - Via Prov. Carpi, 33 - 42015 Correggio (RE)  
Phone: +39 0522 733-411 - Fax: +39 0522 733-410 - www.hofmann-italia.com

### United Kingdom

Snap-on Equipment Ltd. - Unit 17 Denney Road, King's Lynn - Norfolk PE30 4HG  
Phone: +44 118 929-6811 - Fax: +44 118 966-4369 - www.snapon-equipment.co.uk

