

660



THE ALIGNMENT WORK HORSE

geoliner®
WHEEL ALIGNMENT SYSTEMS

Designed for the independent workshop to provide core alignment functions quickly and easily.

1 EASY TO USE

- Software designed together with technicians around the core functions
- Work with confidence using the compensate, warn & alert system

2 FAST TO USE

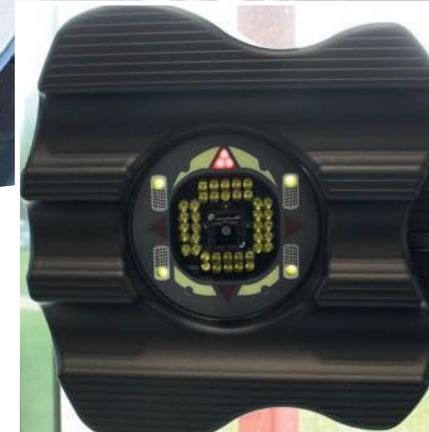
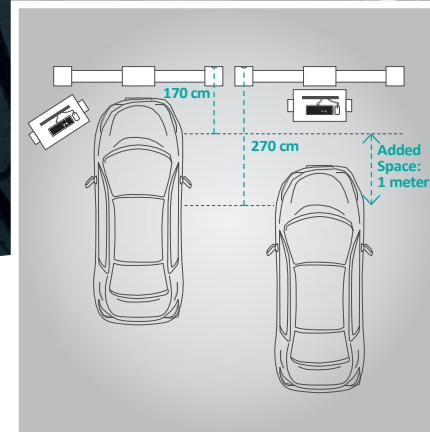
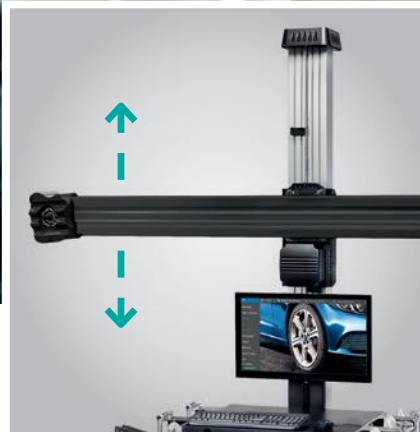
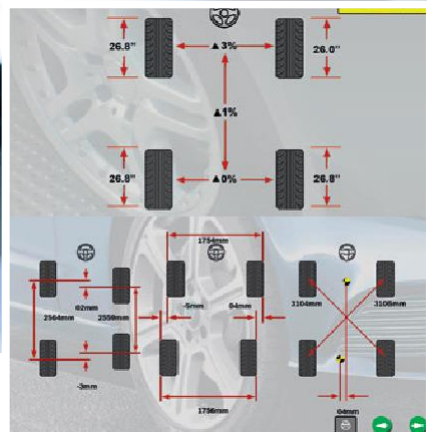
- Video speed camera system
- Intelligent workflows
- Automatic tracking camera beam

3 FLEXIBLE

- Multiple beam configuration
- Cabinet position independent from camera beam
- Use mobility kit to combine cabinet and camera system into one mobile unit

Light weight

Light weight self centering wheel clamps fit 11-22" rims without adapters.



Advanced Dimensions

Rolling Radius and Cross Diagonals

Chassis data as diagonals, track width and wheelbase indicate collision damage. Rolling Radius measurement and tyre size mismatch are common contributors to pull problems.

Automatic Lift Tracking

We use the most advanced camera system

The cameras of the geoliner® 660 lift follow the height of the vehicle avoiding the need to adjust the aligner while moving the lift. Alignment readings are ready in less than two minutes!

Short Bay

Only 1.70 m between cameras and turntables

- The smallest footprint for a 3D aligner
- Accommodates 6 m overall length service bays and work areas
- The cabinet can be moved independently
- Optimize your workshop space
- Save 1 m of space without compromising accuracy and speed

VODI™

Video speed camera technology and patented VODI™ system. Our Vehicle Orientation Directional Indicator guides and speeds up your technician operations throughout the entire measurement procedure.

EZ-TOE

EZ-TOE for full access while adjusting front toe. Turn the front wheels and reach the most difficult adjustment points while still displaying center-toe readings.




Connect it and get more

- Online connectivity automatically downloads specifications and software updates
- With our favorable specs subscription plans you are always updated with the latest vehicle models
- Cloud-based printing option: retrieve and print your reports from any internet connected PC or mobile device
- Wireless remote display (tablet) supported

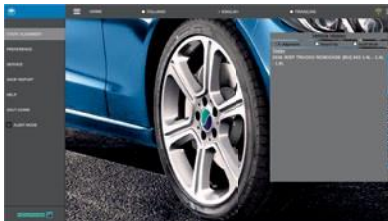
Interactive software

Intelligent and predictive alignment workflow

Avoid guessing with a rapid and reliable system for detecting problems and damage:

-  **Compensate:** measurement ok and compensated with no notification
-  **Warn:** wheel imperfections are compensated and user is warned
-  **Alert:** critical errors are detected and corrective actions are displayed

Easy, intuitive workflow



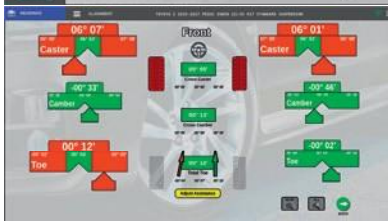
01

SELECT
VEHICLE



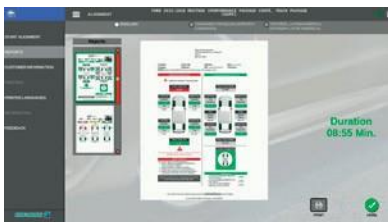
02

MEASURE



03

ADJUST



04

PRINT
REPORT

Camera Beam Configurations

Automatic Lift Tracking

Motorized automatic target tracking camera beam.

Tilting Camera Beam

Camera beam tilting device, the solution if the camera lift cannot be installed or the fix support version is not flexible enough.

Pit Installation

Fixed post supports available, single or double, adjustable in height for installation in case of pit.

geoliner® 660 robust and reliable, makes your job faster and easier

Easy to use

01

- Software designed together with technicians from the ground up for maximum clarity and accessibility. Useful features always one click away
- Intelligent, predictive alignment flows for the selected vehicle model helps the technician
- Compensate, Warn & Alert lets you perform your work fast with professional results
- Robust proprietary operating system, not based on Windows, for hassle-free operation
- Lightweight components for improved ergonomics and less strain on the technician
- The new AC100 wheel clamp is 20% lighter than the previous version
- The new clamp fits 11-22" rims without adapters and allows clamping without removing hubcaps
- Two- or four-wheel alignment capability

Fast to use

02

- Quick start-up of alignment from the home screen:
 - Improved vehicle selection process with model search
 - Alignment history: quick search for Vehicle Registration number and Customer
- All information about the selected vehicle on one page
- Video Speed Camera technology for a faster and more responsive alignment system
 - Rolling Compensation time reduced 35% compared to previous models
 - Intelligent shorter procedure for caster swing: 40% faster than previous models
- Motorized automatic camera beam saves walking and adjustment time for technician
- Patented VODI™ system – the camera's lights guide the technician through the alignment
- EZ-TOE – allows adjustment of toe at any steering angle for easy access
- Quickly switch the language on the home screen and when printing

Flexible

03

- The Mobility Kit allows you to move the complete aligner to the necessary bay and use it with no need of calibration.
- Camera beam and Cabinet connections of up to 50 m apart with a standard ethernet cable
- Independent wall power for cabinet and beam
- Automatic download of specifications and software updates
- Print your reports from any connected PC or mobile device



www.hofmann-equipment.com/en/distributor

Part of the machines is illustrated with optional extras which are available at extra cost. Technical and visual modifications reserved. Cod.: 2010 001 · 02/2021