

**4000KG**  
Max. Capacity

**4880MM**  
Max. Platform Length

**User friendly**  
Electrical Lock Release (E version)



**EE-6435B**  
(with an optional rolling jack)

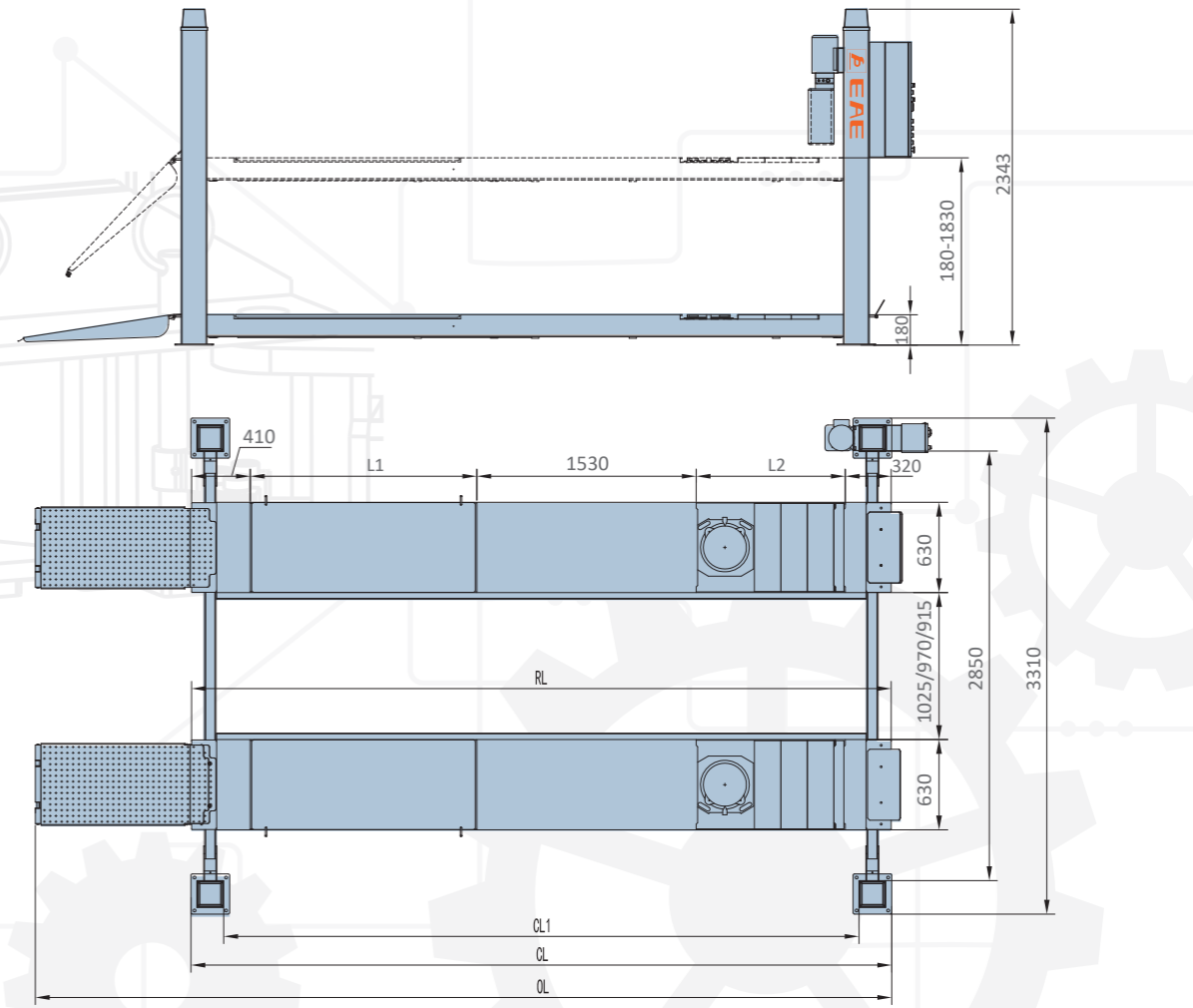


# EE-6435

## FOUR POST LIFT

- Reliable mechanical safety locking system.
- Avoid rapid descending cause by leakage of hydraulic system by applying FLOW-CONTROL technique to hydraulic system.
- Max. height switch limits the travel of runways and ensures cylinders work within the stroke.
- Protect against pinching and shearing using alarming buzzer in descending process.
- 24V safety control voltage.
- Reliable electrical release for easy and efficient use. (E version)
- Adjustable PD positions can accommodate different types of vehicle.
- Compact quick plug for electrical connection releases installers from too many wires and terminals and make initial installation much more efficient. Save more than 70% time on wire connection.
- Low profile runway is convenient for driving on and off and less demanding on space.
- The width between the platform can be ajust to 1025, 970, 915mm when installing.

### OVERALL DIMENSION



B Platforms with front recesses and rear slip plates

### TECHNICAL DATA

Model No.	Lifting capacity	Max. lifting height	L1	L2	RL	CL1	CL	OL
6435B-48L	4000kg	180-1830	1580	1040	4880	4438	4888	5948



Motor Housing

Oil Hose Protection

Optional Rolling Jacks

Solid and Robust Cable Pulleys

