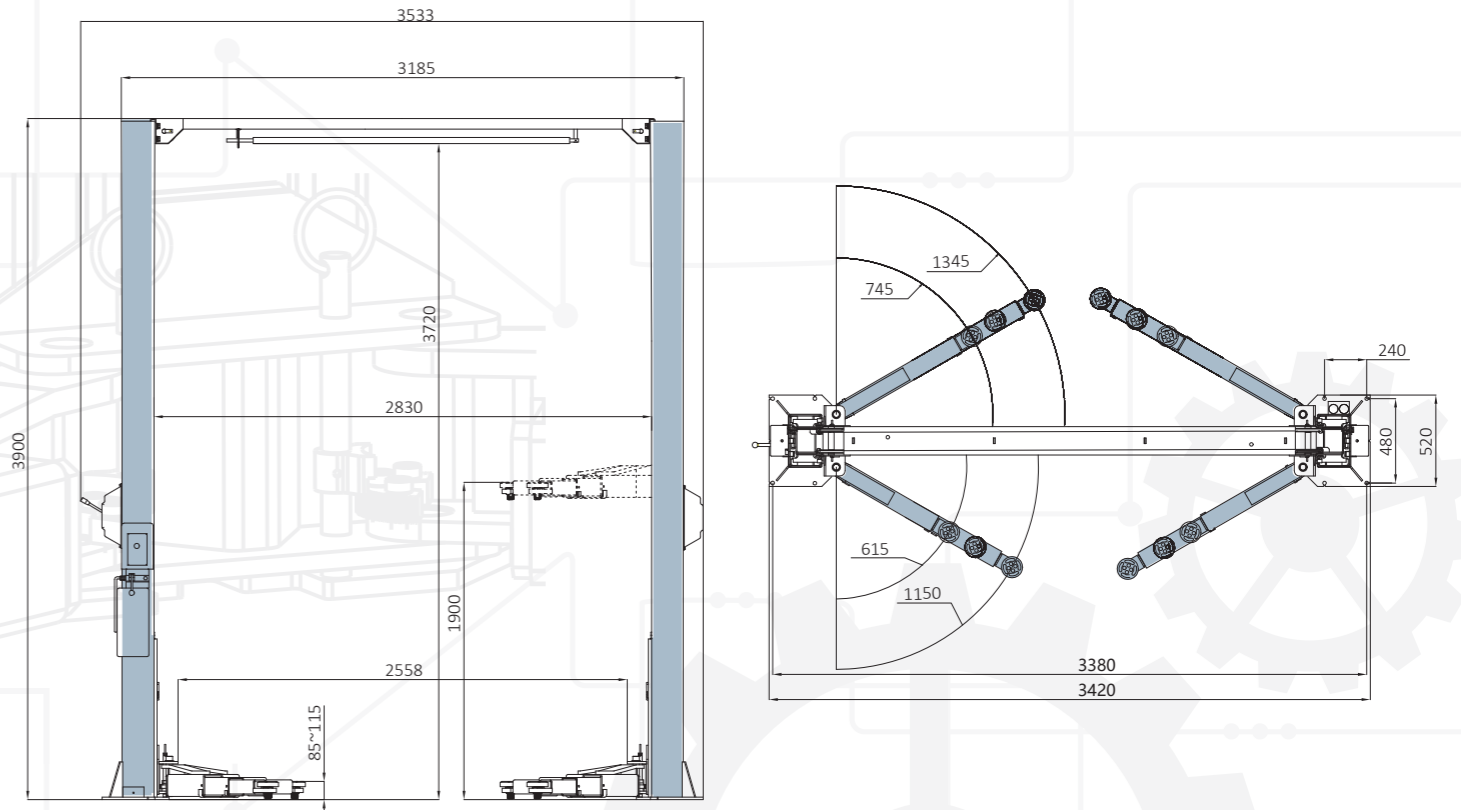


4000KG
Lifting Capacity

One Side Operation
More Convenient



OVERALL DIMENSION



TECHNICAL DATA

MODEL NO.	EE-C9LPA
Lifting capacity	4000kg
Max lifting height	1880mm
Min height	85mm-150mm
Lifting time	45S-60S
Capacity of motor	2.2kW
Overall Height	3900mm
Drive through	2830mm
Electricity supply	According To Customer Needs

* Max. Lifting height is measured with adjustable screw pads in highest position.



EE-C9LPA

TWO POST LIFT

- 4000kg lifting capacity.
- Single side release for mechanical safety locking unit.
- Cylinder straight top device, run more smoothly.
- Durable cylinders in each column carry with anti-surge valves.
- With vehicle roof protection. The power system switches off when vehicle roof touches the rubber protected overhead bar.
- Standard door protection pads to prevent possible damage to the door opened without caution.
- Pre-fixed hydraulic pressure prevents overloading operation.
- Standard chain protection curtain.



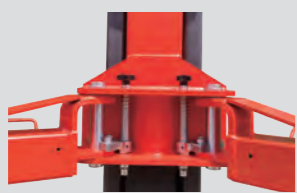
One Side Safety Locks Release



Pulley with Derailment Protection



Door Protection Pads



Strong Carriage and Arm Structure