

# TL3.6PH-S

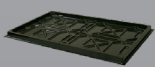
## 3.6 Ton 4 Post Parking Hoist - Standard Height



- » 3.6 Ton lifting capacity
- » Double your parking space
- » Diamond plated platforms
- » Single point lock release
- » Certified to Australian Standards and design registered with Worksafe
- » Mechanically locks each (170mm) interval
- » Anti-surge valve
- » Slack / loose cable safety locks
- » Durable Hammertone powder coat finish
- » 1 Year parts & labour warranty

### INCLUSIONS

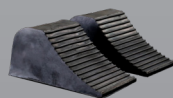
### OPTIONS



Drip Trays



Wheel Stops



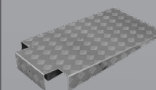
Wheel Chocks



Caster Kit



Steel Tool Tray

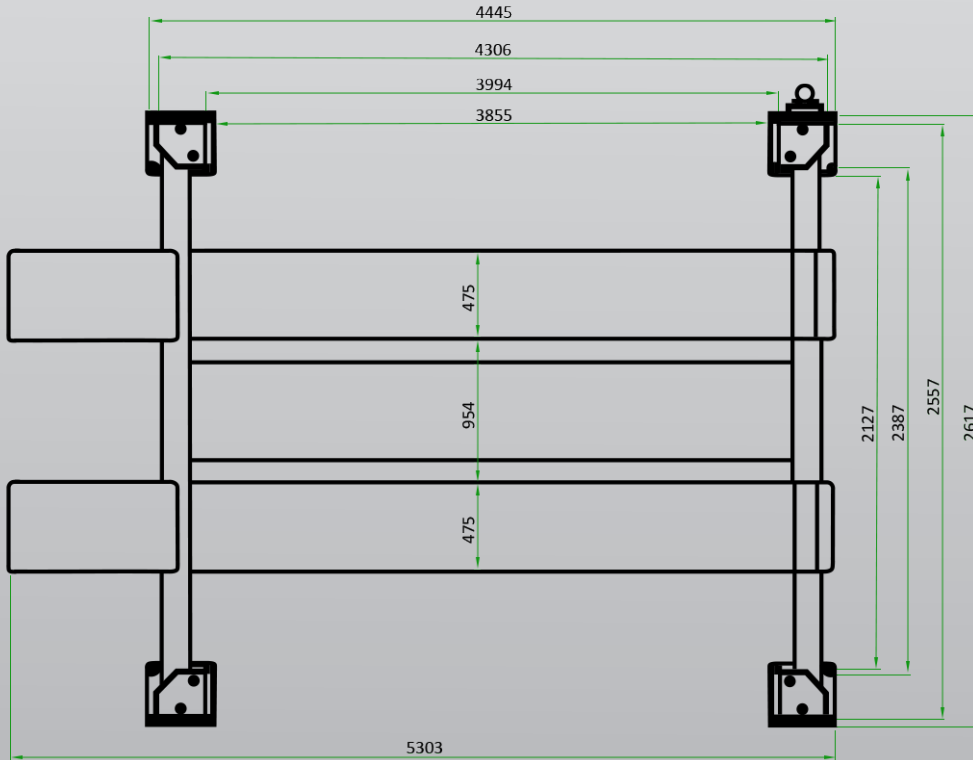


Aluminium Approach Ramps



RJ35 Manual Sliding Jack

# TL3.6PH-S



**Minimum Concrete Requirement**

100mm

**Recommended Ceiling Height**

3.4m

**Power Requirements**

240v

2.2kw 14.5 amps

**Freight Dimensions**

428 x 57 x 76cm

760kg

