

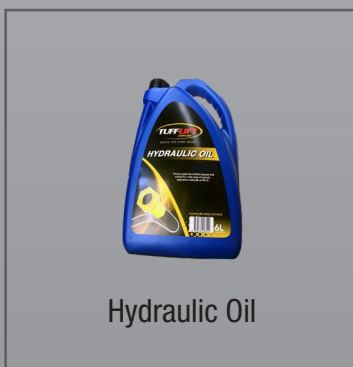
EE-65A

4.0 Ton Full Rise Scissor Lift - Electronic Controls (Directional)

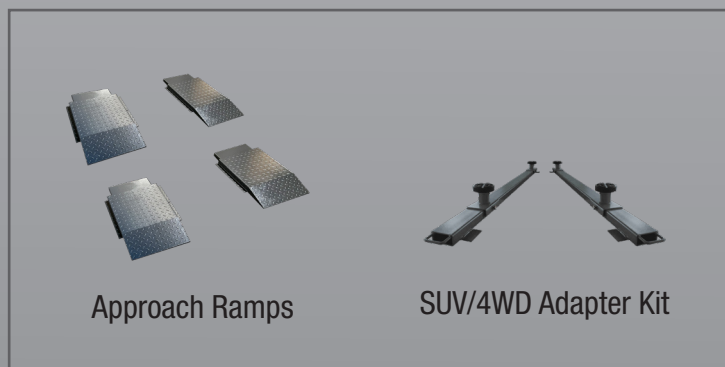


- » 4.0 Ton lifting capacity
- » Ideal for workshops where space is limited
- » Durable charcoal Hammertone powder coat finish platforms, with orange scissor
- » Four cylinder design
- » Full electronic controls
- » Pneumatic lock release
- » Surface mount
- » Drive-on ramps lock into position as platform extends
- » Height limit switch
- » Self-lubricating bushes and bearings
- » Minimum height 130mm
- » 5 Year structural, 2 years electrical, parts & labour warranty
- » Certified to Australian Standards and design registered with Worksafe

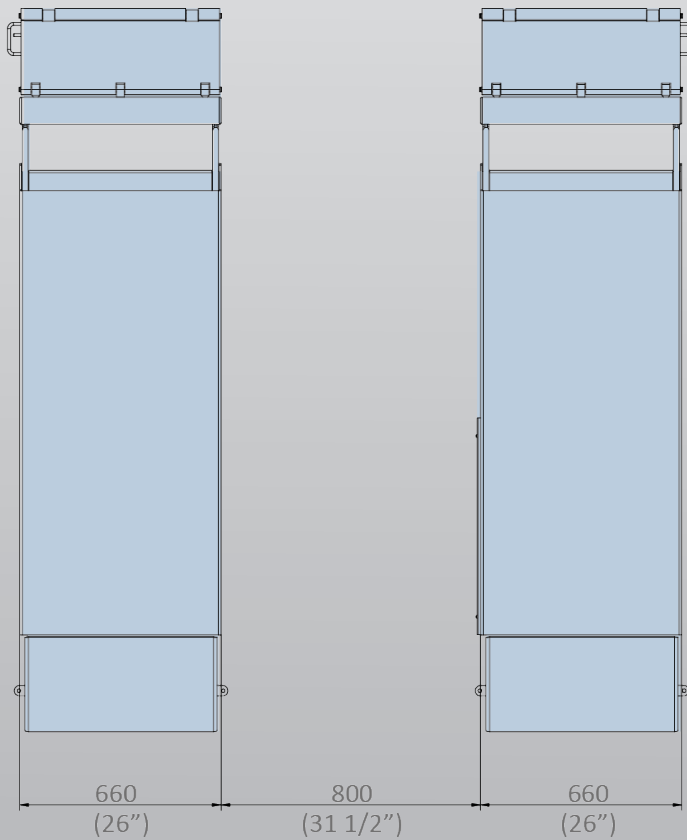
INCLUSIONS



OPTIONS



EE-65A



Minimum Concrete Requirement
150mm
Power Requirements
240v
2.2kw 16 amps
3 phase
2.2kw 5amps
No neutral required
Freight Dimensions
225 x 70 x 96cm
1100kg

