

# TL3.6PH-H

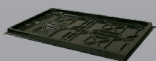
## 3.6 Ton 4 Post Parking Hoist - Extra High



- » 3.6 Ton lifting capacity
- » Double your parking space
- » Diamond plated platforms
- » Single point lock release
- » Extra height for storing taller vehicles
- » Mechanically locks each (170mm) interval

- » Anti-surge valve
- » Slack / loose cable safety locks
- » Durable charcoal Hammertone powder coat finish
- » 5 Year structural, 1 year electrical, parts & labour warranty
- » Certified to Australian Standards and design registered with Worksafe

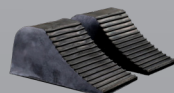
### INCLUSIONS



Drip Trays



Wheel Stops



Wheel Chocks



Hydraulic Oil



Caster Kit

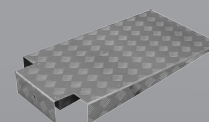


Steel Tool Tray

### OPTIONS

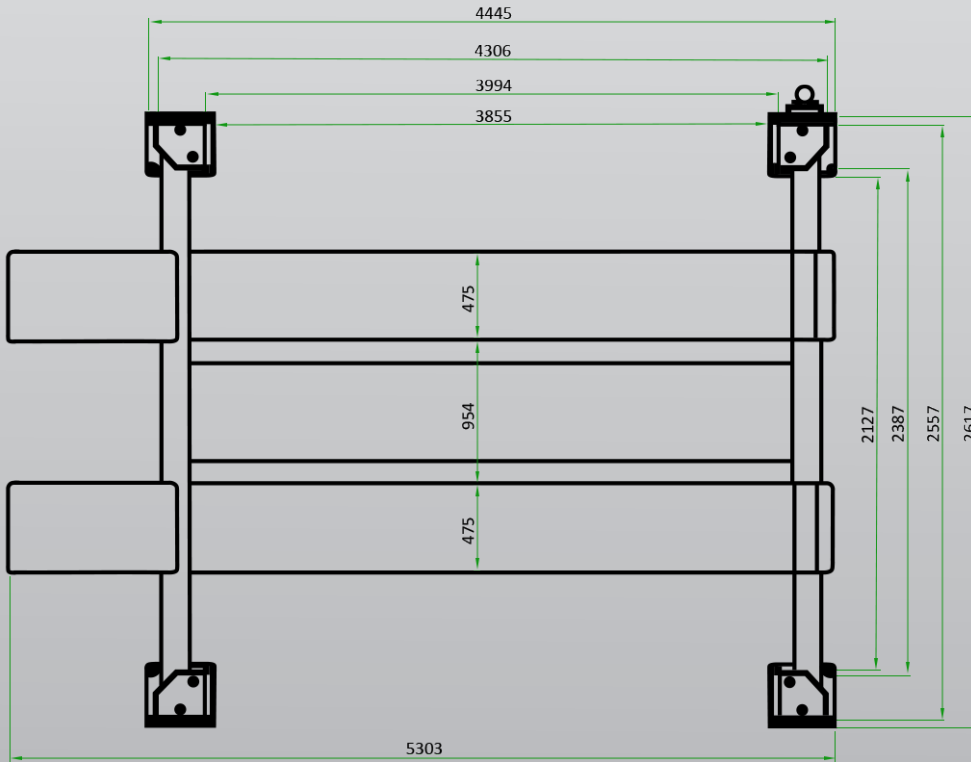


RJ35 Manual Sliding Jack



Aluminium Approach Ramps

# TL3.6PH-H



### Minimum Concrete Requirement

100mm

### Recommended Ceiling Height

3.7m

### Power Requirements

240v

2.2kw 14.5 amps

3 phase

2.2kw 7 amps

No neutral required

### Freight Dimensions

428 x 57 x 76cm

775kg

