

EE-65A

4.0 Ton Full Rise Scissor Lift - Electronic Controls (Directional)



» 4.0 Ton lifting capacity

» Ideal for workshops where space is limited

» Durable charcoal Hammertone powder coat finish platforms, with orange scissor

» Four cylinder design

» Full electronic controls

» Pneumatic lock release

» Surface mount

» Drive-on ramps lock into position as platform extends

» Height limit switch

» Self-lubricating bushes and bearings

» Minimum height 130mm

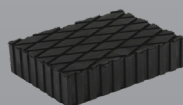
» 5 Year structural, 2 years electrical, parts & labour warranty

» Certified to Australian Standards and design registered with Worksafe

INCLUSIONS

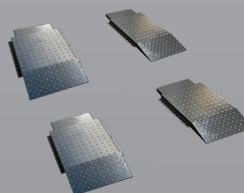


Hydraulic Oil



Rubber Pads

OPTIONS

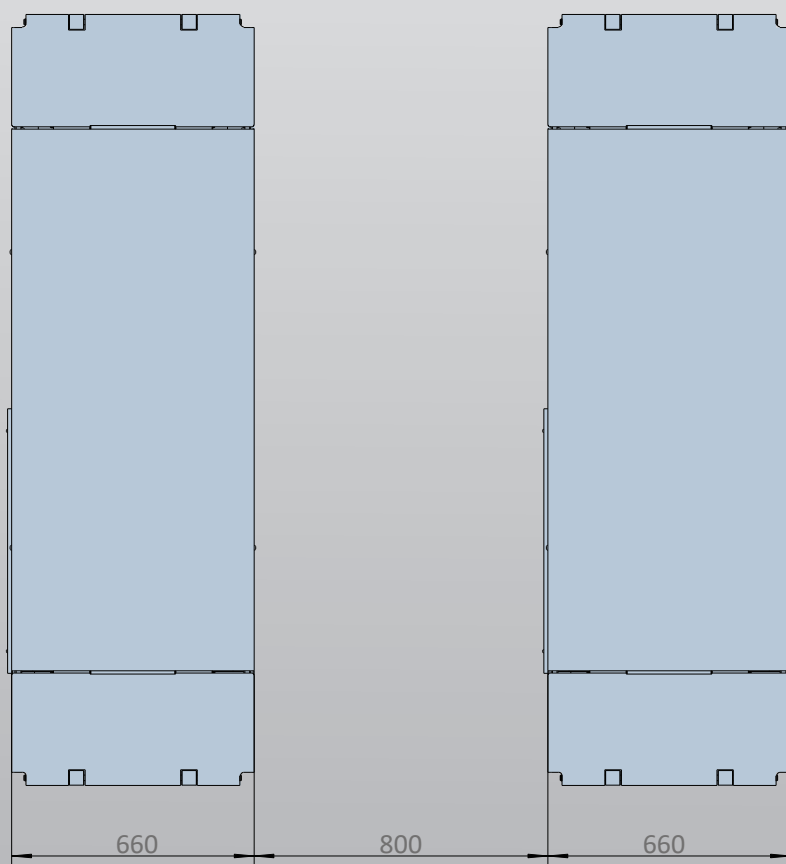


Approach Ramps



SUV/4WD Adapter Kit

EE-65A



Minimum Concrete Requirement

150mm

Power Requirements

240v

2.2kw 16 amps

3 phase

2.2kw 5amps

No neutral required

Freight Dimensions

225 x 70 x 96cm

1100kg

