

EE-6501V2

3.0 Ton Full Rise Scissor Lift - Electronic Controls (Directional)



» 3.0 Ton lifting capacity

» Ideal for workshops where space is limited

» Minimum height 105mm

» Durable charcoal Hammertone powder coat finish platforms, with orange scissor

» Aluminium power unit

» Surface mount

» Pneumatic lock release

» Four cylinder design

» Height limit switch

» Drive on ramps and platform extensions lock into position

» Self-lubricating bushes and bearings

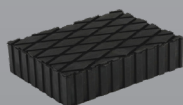
» 5 Year structural, 2 years electrical, parts & labour warranty

» Certified to Australian Standards and design registered with Worksafe

INCLUSIONS

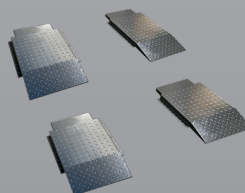


Hydraulic Oil



Rubber Pads

OPTIONS

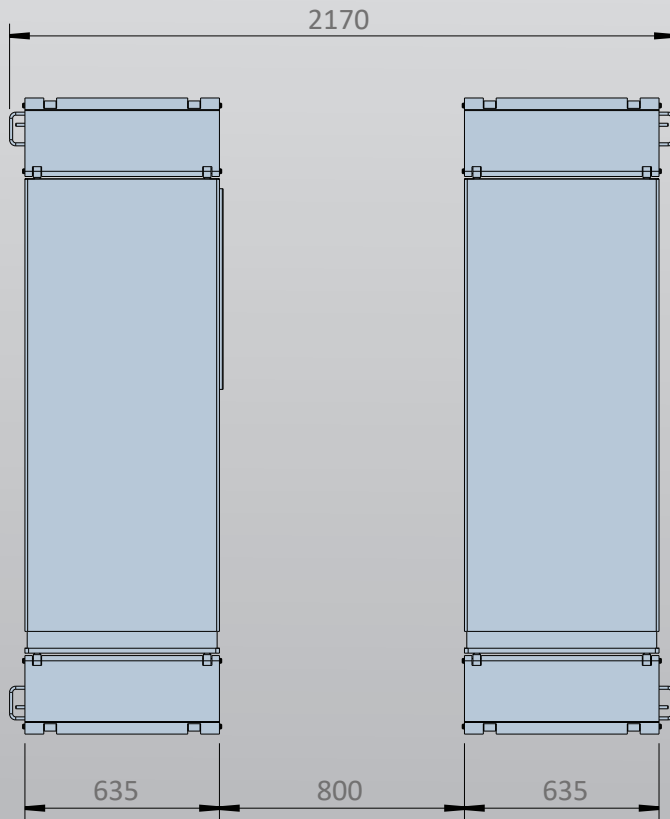


Approach Ramps



SUV/4WD Adapter Kit

EE-6501V2



Minimum Concrete Requirement

150mm

Power Requirements

240v

2.2kw 16 amps

3 phase

2.2kw 5amps

No neutral required

Freight Dimensions

205 x 70 x 100cm

900kg

